

Revolutionary System for Oyster Farming

The Ortac Oyster Farming System was developed to enable oyster farmers to grow both Pacific (*Crassostrea gigas*) and European Native (*Ostrea edulis*) oysters inter-tidally more efficiently in comparison with more traditional labour intensive cultivation methods. The holding container features a sophisticated and unique forced upwelling flow-through system that both improves average growth rates and size distribution without compromising shell quality. The Ortac Oyster Farming System has been in commercial use with in the oyster farming industry in excess of 10yrs and has produced farmers with very convincing results.

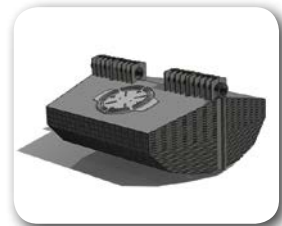
Designed for Inter-tidal Zone



Even Size Distribution



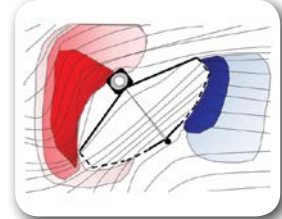
Radical Modular Plastic Design



Easy to Transport, Assemble and Store



Unique Forced Upwelling Flow System



Improved Growth Rates



Cleaner Shells



Reduced Manual Handling and Labour Costs

What oyster farmers say about Ortac

“ This is a major leap forward in the production of Native Oysters! ”

“ The improvement in shell quality and size distribution, combined with the minimal labour required, makes it a superior oyster farming system. ”



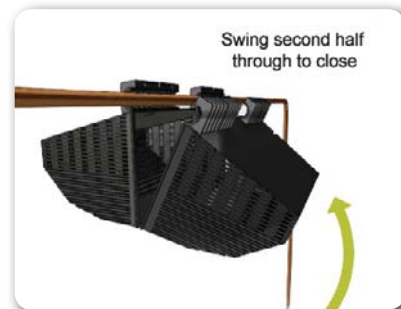
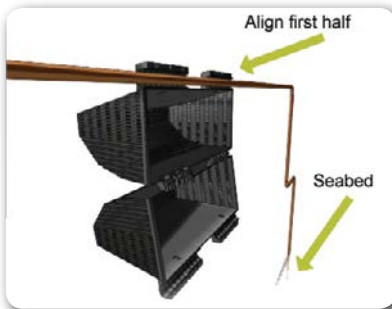
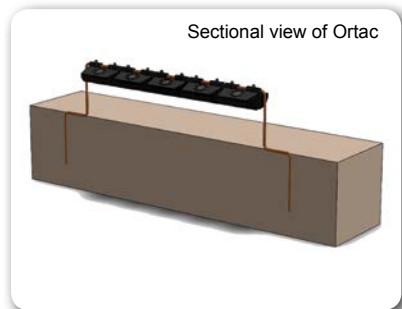
Fusion Marine Limited
 The Marine Resource Centre
 Barcaldine, By Oban, Argyll PA37 1SE
 Scotland UK
 Tel: INT +44 (0)1631 720 730
 Fax: INT +44 (0)1631 720 731
 email: enquiries@fusionmarine.com

Global Aquaculture Solutions

www.fusionmarine.com

Developed for Ease of Use

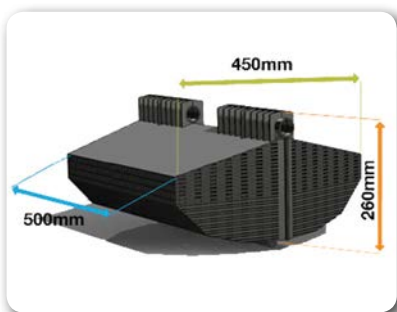
The standard Ortac trestle was designed and developed to be easy to transport, install, remove and store. The trestle which is formed out of Ø20mm rebar is simply pushed into the shore line. Its 660mm long legs sit just below the surface so that the main hanging bar positioned 660mm off the ground. Five Ortacs can then be stocked with oysters and fixed to its simple but effective frame.



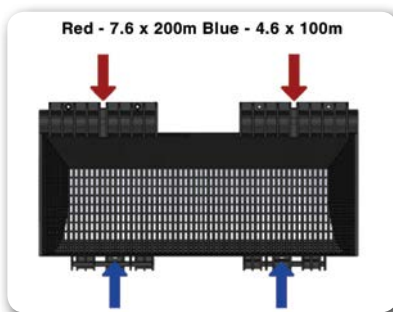
Ortac Technical Specifications

Material	Length	Width	Dry weight	Mesh Size
Polypropylene	500mm	450mm	1.4Kg	12.5mm x 4.5mm retains 7mm grade <i>Crassostrea gigas</i>

Trestle (for 5 Ortacs)	Trestle Fixings	Lid (Optional)
Available in Ø20mm rebar. Ortacs can be connected to this simple but effective frame.	Ortacs can be fitted to a standard rebar trestle either with Ortac quick release clips or standard cable ties. Red - 7.6 x 200mm Blue - 4.6 x 100mm	Ortacs can be fitted with an optional inspection lid. A Ø152mm hole is required to be cut to achieve this.



General Dimensions



Trestle Fixing Positions



Check out the Video of Ortac in Action on Our Website!

